

**Wild Rice Watershed District**

***Moccasin Creek Sub-Watershed  
Regional Conservation Partnership Program (RCPP)  
Public Scoping Meeting***

**June 12, 2017**

# Public Scoping Meeting OBJECTIVES

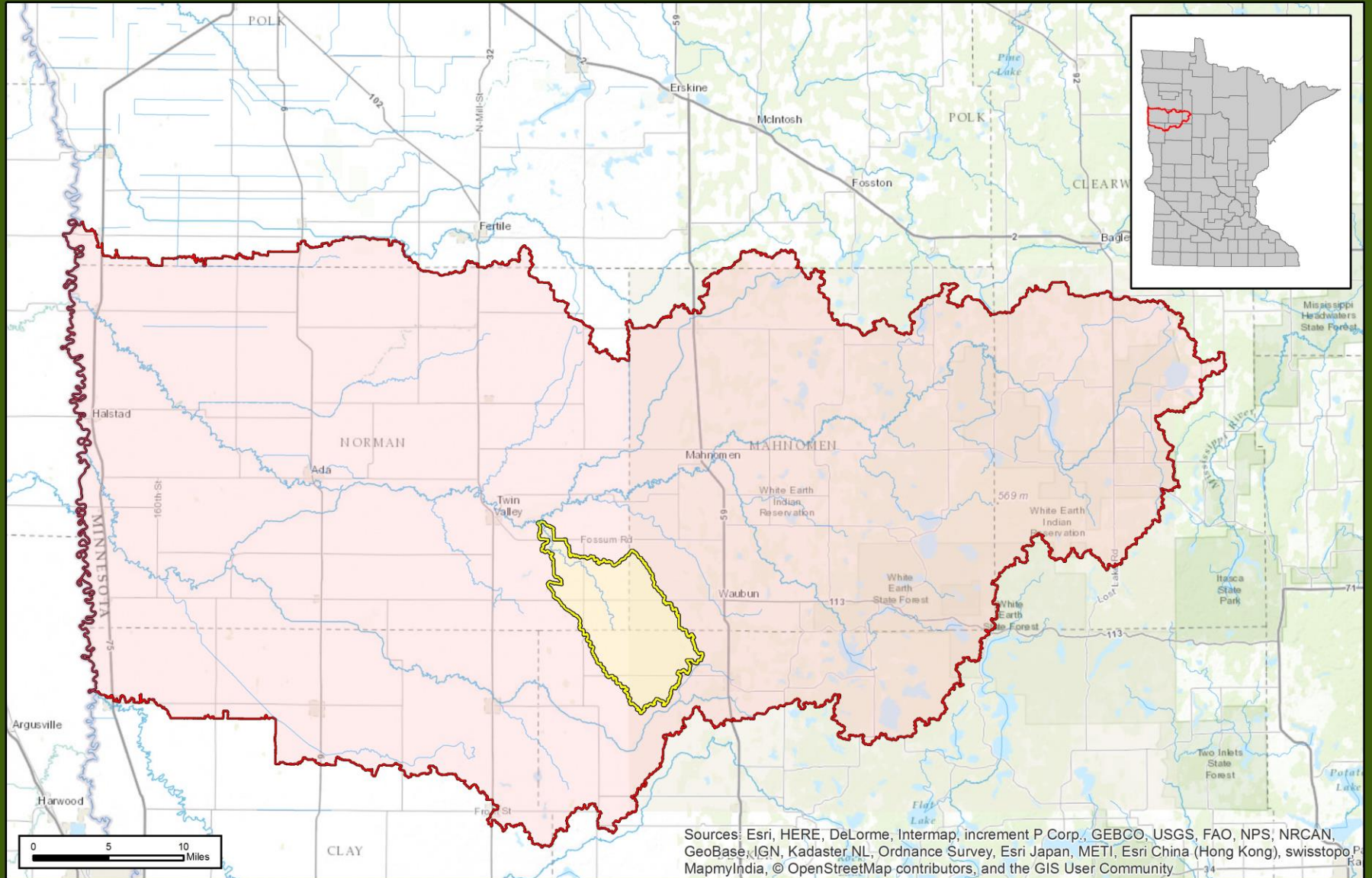
1. Overview - PL566 Planning process
2. Solicit Comments on the Resource Concerns
3. Inform Public of Future Steps

# Public Scoping Meeting

# AGENDA

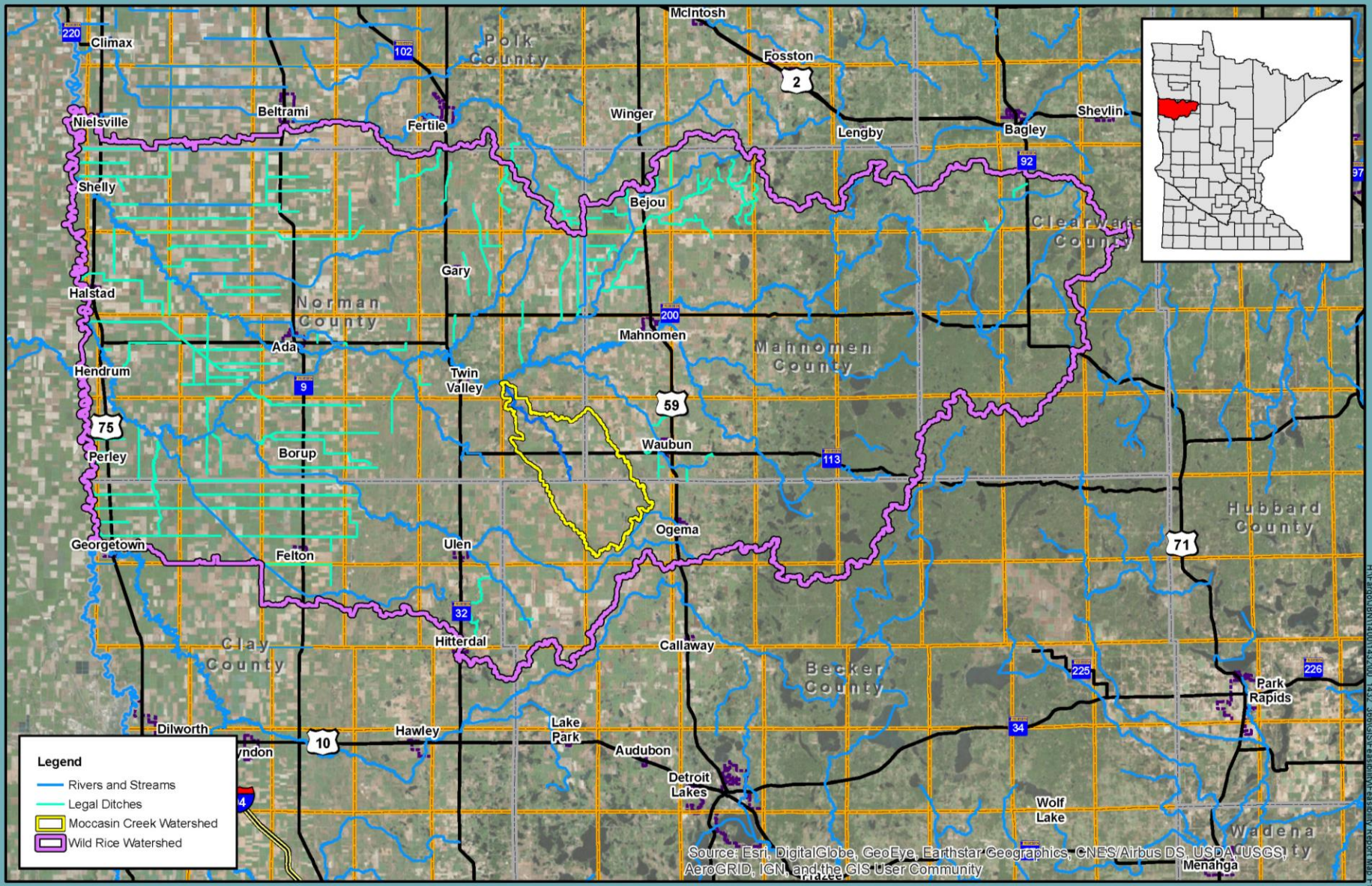
1. Introduce Study Area
2. Public Law 566 Planning Process Overview
3. Watershed Setting and Methods for Obtaining Resource Concerns
4. Overview of Next Steps
5. Questions/Public Comment Period

# Study Area





# Study Area



# Regional Conservation Partnership Program (RCPP)

- 2014 Farm Bill
- Red River Retention Authority awarded \$12M
- RRRRA approved 20 Watershed Planning Efforts
  - 14 Minnesota, 6 North Dakota
- WRWD
  - South Branch, Green Meadow, and Moccassin Creek



# RCCP Planning Process

## INITIATE PLANNING

- \* Discuss purpose and need for project with sponsors/Initiate study.

## Step 1 - IDENTIFY PROBLEMS, OPPORTUNITIES & CONCERNS

- \* Identify the need for the proposed action (quantify, extent, magnitude, timing, frequency etc.)

## Step 2 - DETERMINE OBJECTIVES

- \* Write purpose and need statement and Write scope of plan-EA/EIS

## Step 3 - INVENTORY RESOURCES

- \* Conduct detailed resource inventories and watershed assessment
- \* Economics, social effects, Archeological and historic resources
- \* Engineering/Geology/Support maps
- \* Document problems

## Step 4 - ANALYZE RESOURCE DATA

- \* Geology, Hydrology & Hydraulics, Cultural, Economics and Social

## Step 5 - FORMULATE ALTERNATIVES

- \* Develop reasonable alternatives, mitigation strategies and costs (Preliminary plans)

## Step 6 - EVALUATE ALTERNATIVES

- \* Env. Resources, Geotechnical, Hydrology & Hydraulics, Economics, Significance of effects,...

## Step 7 - MAKE DECISIONS (EA/EIS, Public Involvement,...)

# RCPP Planning Process - NEPA

RCPP planning process will follow NEPA guidelines

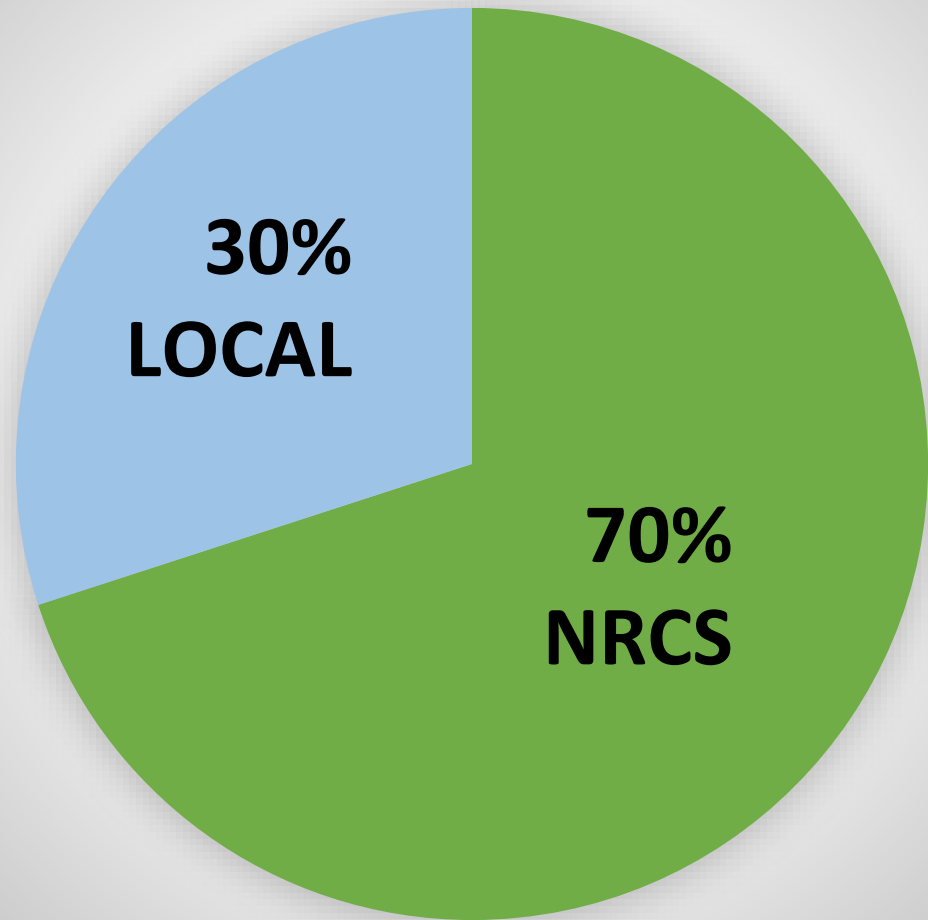
- \* 40 CFR 1506.6 – Public Involvement
- \* Primary Goal
  - \* Ensure all interested and affected parties are aware of the proposed action

(a) “make diligent efforts to involve the public in preparing and implementing their NEPA procedures.”

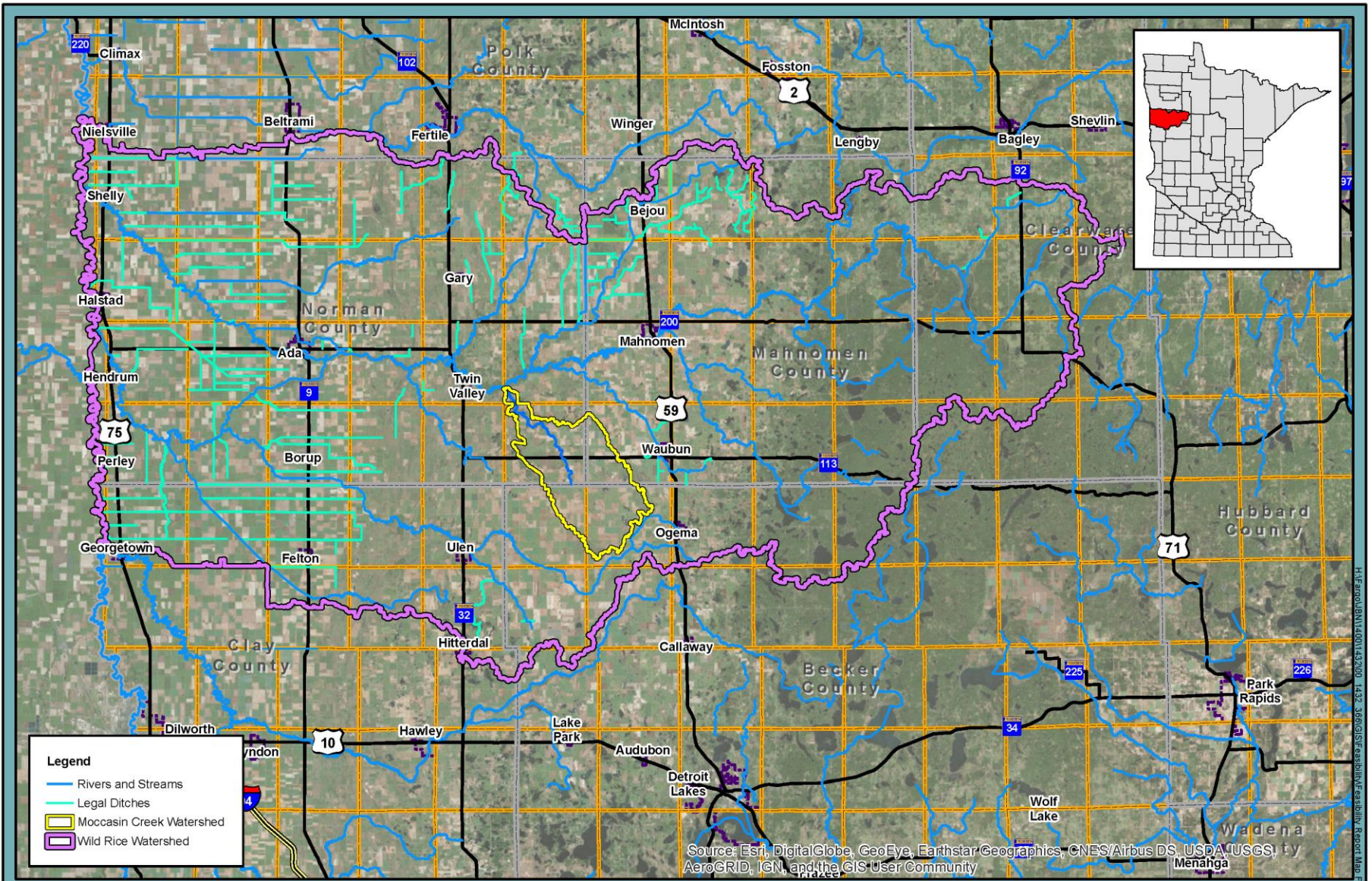


# Why RCPP?

COST SHARE BREAKDOWN



# Watershed Setting



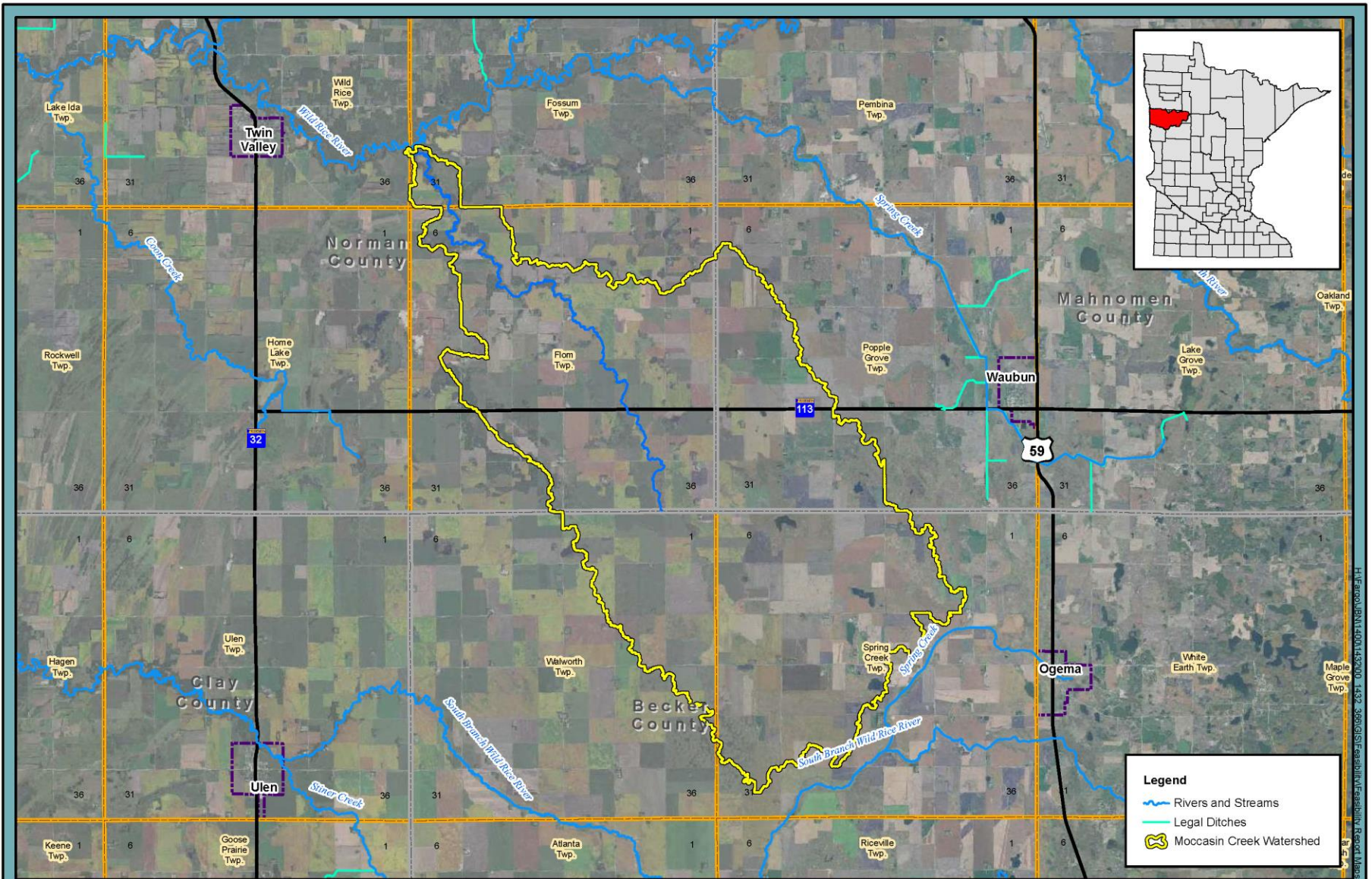
F 01

**Figure 01: Wild Rice Watershed**  
 Moccasin Creek Watershed  
 Feasibility Study  
 Wild Rice Watershed District



H:\F01\01\Map\Map14001\_143200\_1432\_368\GIS\Fasibility\Fasibility\_Report\_Map\_F.mxd





**Legend**

- Rivers and Streams
- Legal Ditches
- Moccasin Creek Watershed

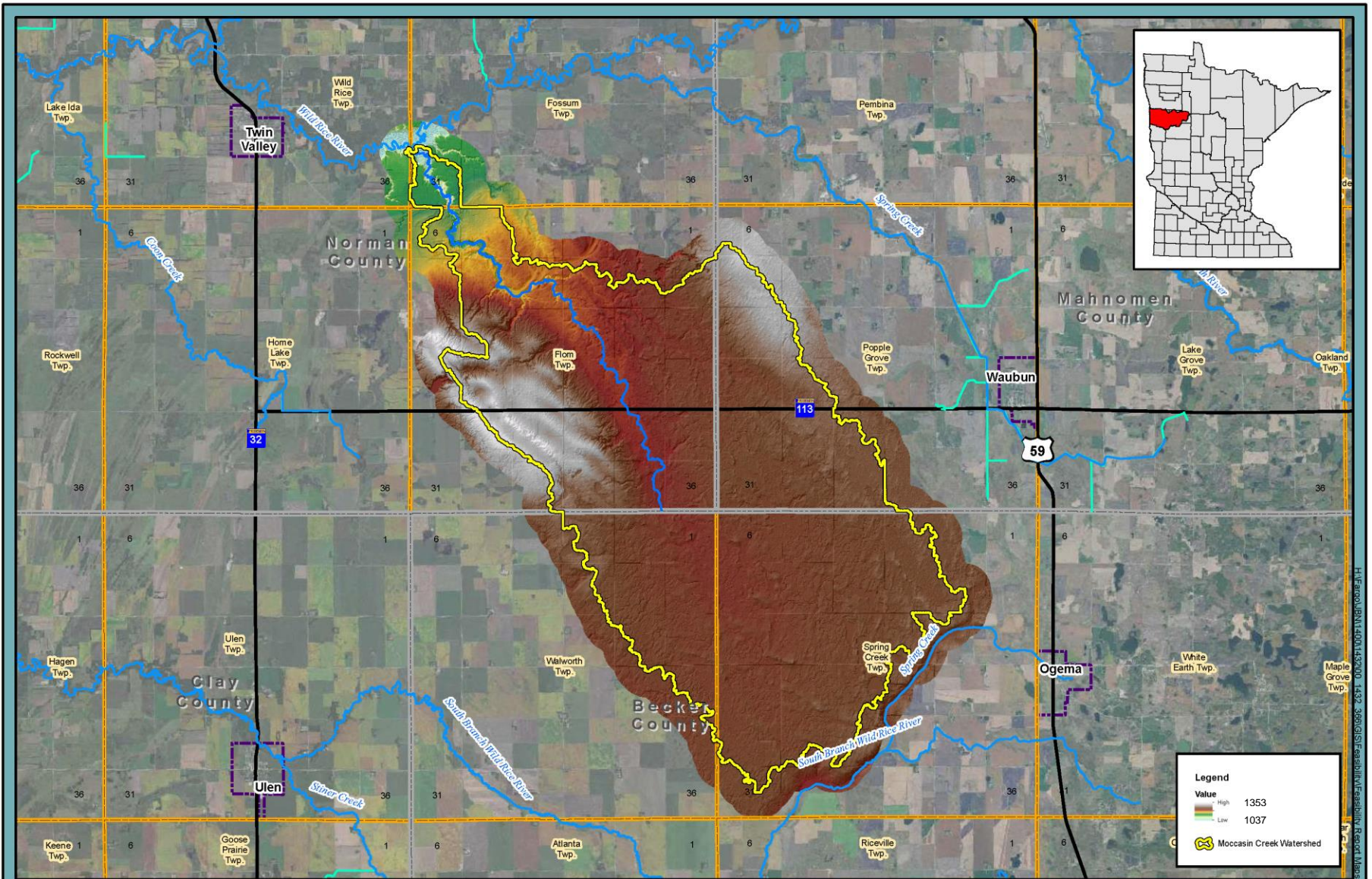
**F-02**

**Figure 02: Green Meadow Watershed**  
 Moccasin Creek Watershed  
 Feasibility Study  
 Wild Rice Watershed District



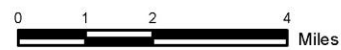
H:\arcroot\BNI\100114\2000\_1437\_366\GIS\Facility\Facility\_Road\_Map.mxd





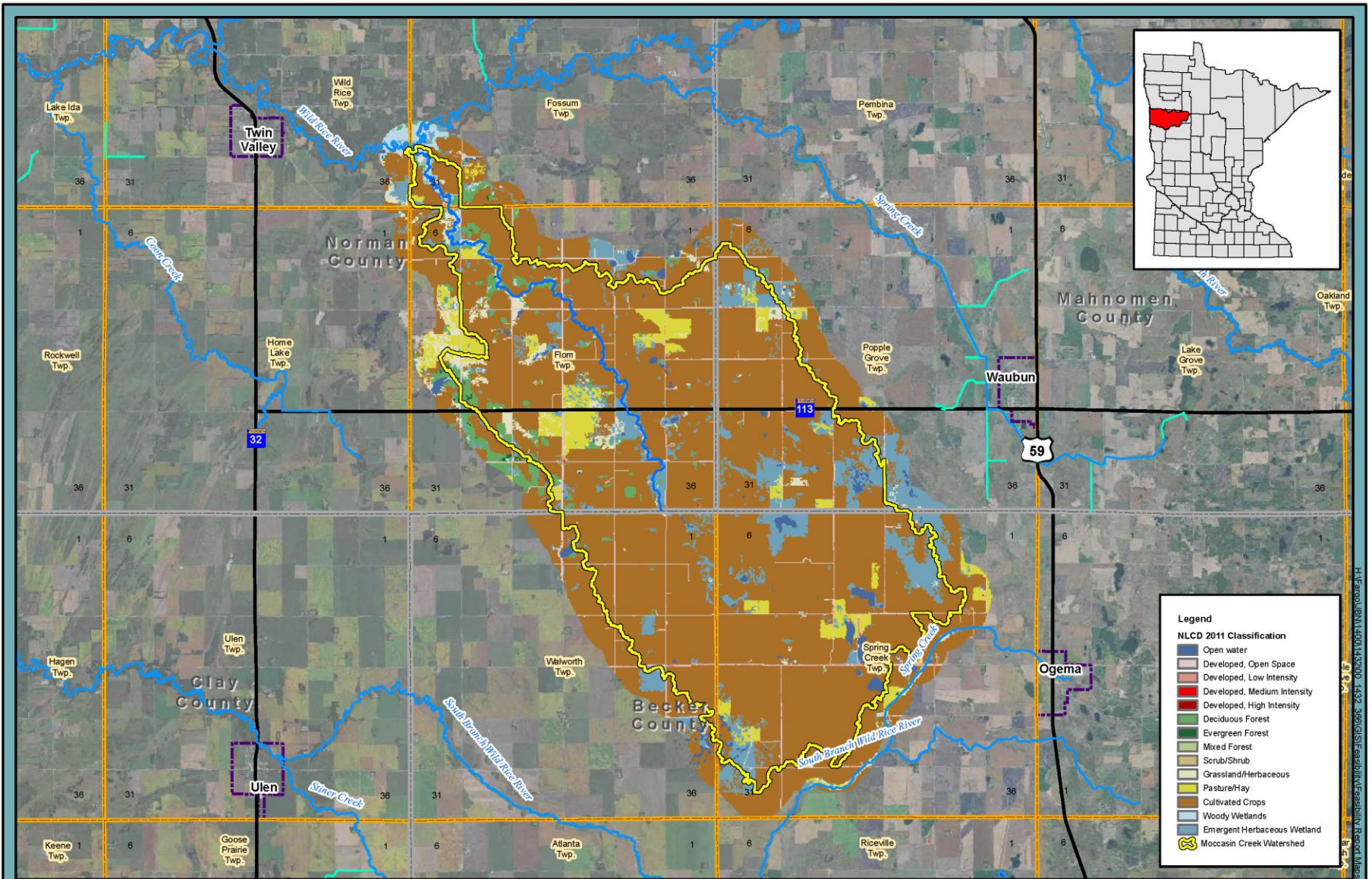
F-03

**Figure 03: LiDAR Map**  
 Moccasin Creek Watershed  
 Feasibility Study  
 Wild Rice Watershed District



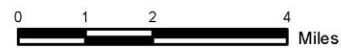
H:\Project\BNI\14001\142000\_1432\_3656\GIS\Facility\Facility\_Report\_Map.mxd





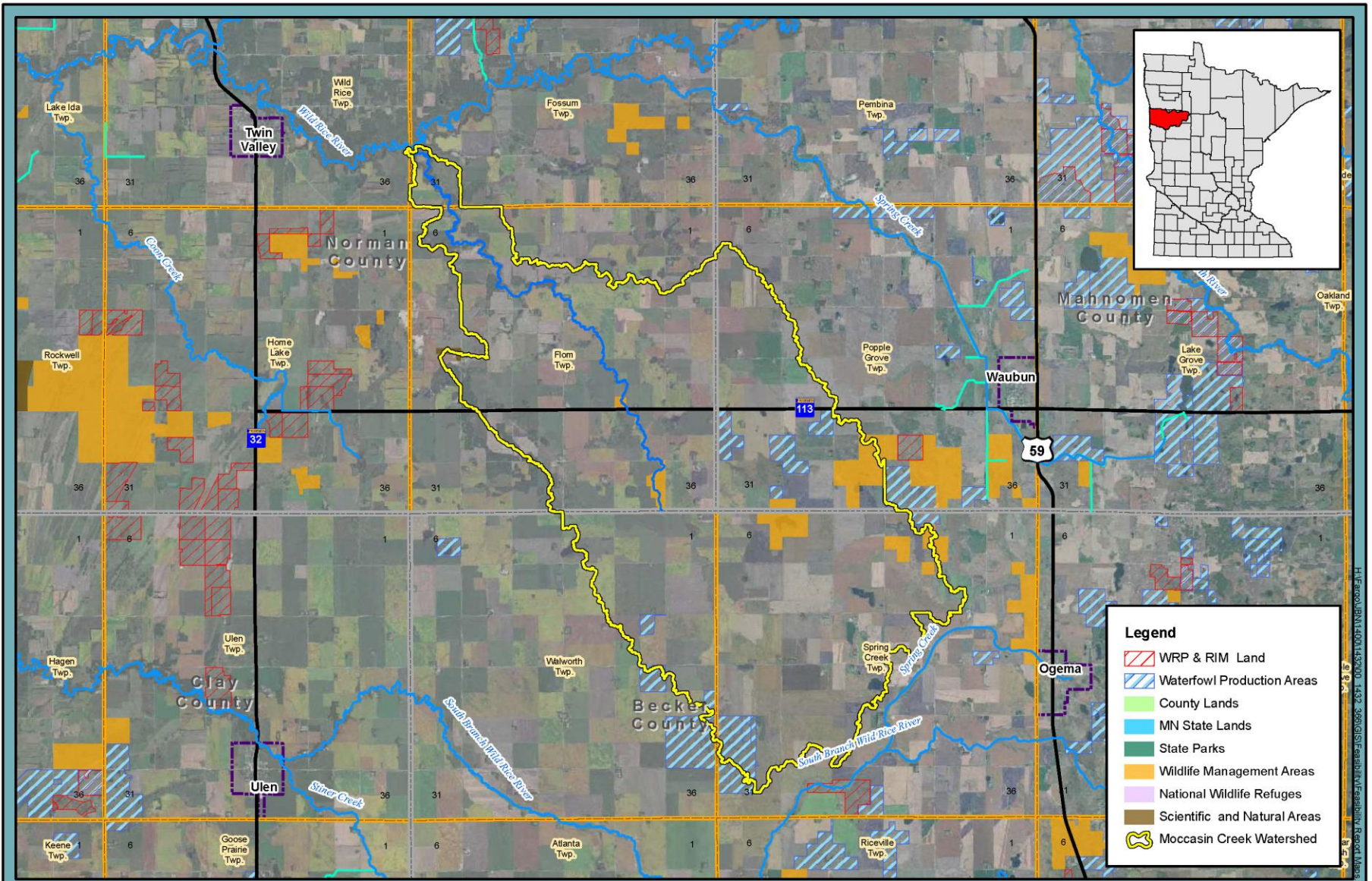
F-05

**Figure 05: National Land Cover Data 2011**  
 Moccasin Creek Watershed  
 Feasibility Study  
 Wild Rice Watershed District



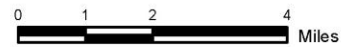
H:\arcgis\BNA\100114001\143200\_1437\_366\GIS\Facilities\Facilities\_Road\_Map.mxd





F-07

**Figure 07: USDA/NRCS Easements and State/County Lands**  
 Moccasin Creek Watershed  
 Feasibility Study  
 Wild Rice Watershed District



H:\arcgis\BNA\14001143200\_1432\_366\GIS\Facilities\FacilityFeasibilityReport\_Maps.mxd



# General Resource Concern Categories



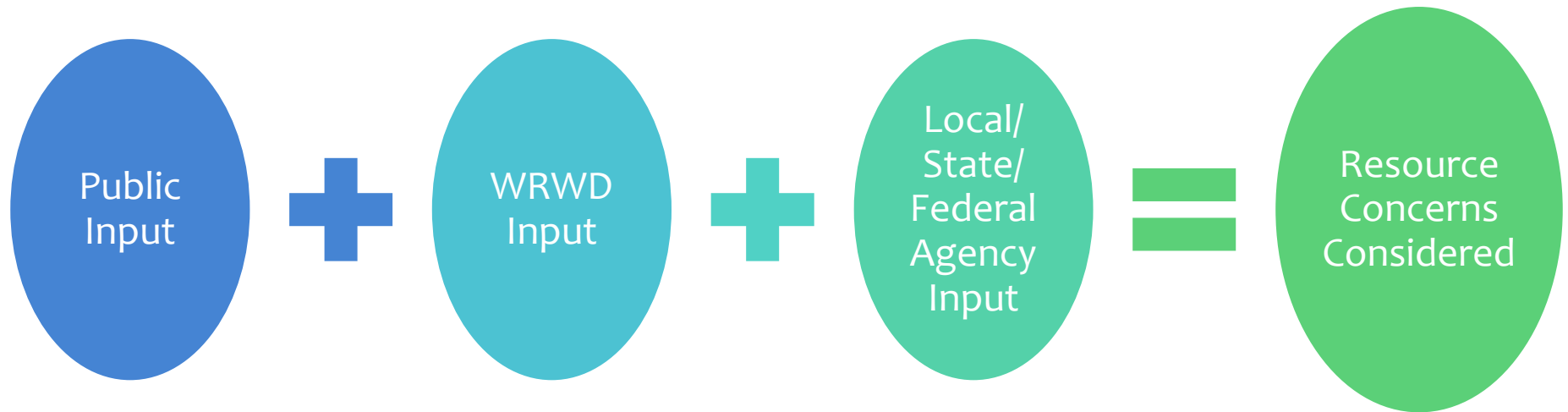
- \* **Flooding/Flood Damages** (i.e. agricultural effects from delayed planting, prevented planting, crop flood inundation, road damages, culvert/bridge damages, breakout flows, field erosion/deposition, floodplain management, etc.)



- \* **Water Quality/Erosion and Sedimentation** (water quality, water resources, soil resources, field erosion/deposition, channel erosion/deposition, etc.)
- \* **Wildlife and Habitat** (Fish and wildlife, wetlands, endangered and threatened species, invasive species, migratory birds, forest resources, etc.)



# Public Input/Concern Identification Process



# Watershed Planning Timeline

## **1-3 Months**

- \* Plan of Work
- \* Develop Team
- \* Feasibility Report
- \* Define Concerns
- \* Field Survey
- \* Begin H&H
- \* **Public Meeting**

## **3-6 Months**

- \* Purpose & Need
- \* Scope EA
- \* Field Survey
- \* Ex. H&H Modeling
- \* Field Inventory

## **6-12 Months**

- \* Finalize Ex. H&H
- \* Without Project Conditions
- \* Economics
- \* Preliminary Alternative Screening
- \* Preliminary Cultural Review

## **12+ Months**

- \* Alternative Screening
- \* Geotech
- \* Impacted Lands
- \* Alternatives for Detailed Study
- \* H&H Alternatives
- \* Detailed Survey, Geotech, Design

# Questions/Comments/ Form Completion

# Public Input

## Wild Rice Watershed District

11 5th Ave East · Ada MN 56510 · Phone (218) 784-5501 · Fax (218) 784-2459 · www.wildricewatershed.org

**Public Scoping Meeting/Open House Comment Form**  
**Moccasin Creek Sub-Watershed**  
**NRCS Watershed Plan**  
 June 12, 2017

**Background**

The Wild Rice Watershed District (WRWD) secured funding through the Red River Retention Authority for Watershed Planning under the Regional Conservation Partnership Program (RCPP), administered by the Natural Resources Conservation Service (NRCS). The RCPP funding was made available for watershed planning in the Moccasin Creek Sub-Watershed and it is required to follow Public Law 83-566 requirements.

The Watershed Planning must also comply with the National Environmental Protection Act (NEPA) requirements. Tasks required for the NRCS Watershed Plan generally include: Identifying a Purpose and Need, Developing an Environmental Assessment, Identifying the Affected Environment (resource problems), Developing Alternatives, Identifying Environmental Consequences of the alternatives, determining a Preferred Alternative, and creating an overall Watershed Plan. Public participation will be a vital component throughout the entire planning process, beginning with this public meeting.

**Purpose of Today's Meeting**

The initial step in NRCS Watershed Planning, as directed by NEPA, is to allow for input from all interested parties including federal, state, and local agencies and other interested groups or persons. Initial input will be focused on resource concerns in and adjacent to the Moccasin Creek Sub-Watershed. In order to gather input on resource concerns, we would request that the attached comment form be completed and provided to the WRWD.

**Identified Resource Concerns:**

- **Flooding/Flood Damages** (i.e. agricultural effects from delayed planting, prevented planting, crop flood inundation, road damages, culvert/bridge damages, breakout flows, field erosion/deposition, floodplain management, etc.)
- **Water Quality/Erosion and Sedimentation** (water quality, water resources, soil resources, field erosion/deposition, channel erosion/deposition, etc.)
- **Wildlife and Habitat** (Fish and wildlife, wetlands, endangered and threatened species, invasive species, migratory birds, forest resources, etc.)
- **Other**

Please fill out the following information based on your priorities for the Moccasin Creek Sub-Watershed.

Comment forms will be accepted for all forms postmarked on or before July 12, 2017.

Completed comment forms can be mailed to the WRWD office at:

Wild Rice Watershed District  
 11 5<sup>th</sup> Avenue East  
 Ada, MN 56510

Or via email to [nikki@wildricewatershed.org](mailto:nikki@wildricewatershed.org)

Name: \_\_\_\_\_

Phone Number: \_\_\_\_\_

Email Address: \_\_\_\_\_

Mailing Address: \_\_\_\_\_

Circle the most appropriate ranking for each concern listed below. Refer to the KEY for definitions of each ranking. Concerns where the degree of concern is not indicated will be considered a zero value (No Concern or Not Relevant).

**KEY:** 0 = No Concern or Not Relevant    1 = Minimal Concern    2 = Minor Concern  
 3 = Moderate Concern    4 = Significant Concern    5 = Severe Concern

<i>Concerns for Project Scoping:</i>	No Concern					Severe Concern					
• Flooding/Flood Damages.....	0	1	2	3	4	5					
• Water Quality/Erosion and Sedimentation.....	0	1	2	3	4	5					
• Wildlife and Habitat.....	0	1	2	3	4	5					
• Others (Please describe in comment section).....	0	1	2	3	4	5					

Additional Comments: \_\_\_\_\_

\_\_\_\_\_

\_\_\_\_\_

\_\_\_\_\_

\_\_\_\_\_

\_\_\_\_\_

\_\_\_\_\_



# Public Input

## *Wild Rice Watershed District*

### Identified Resource Concerns:

- **Flooding/Flood Damages** (i.e. agricultural effects from delayed planting, prevented planting, crop flood inundation, road damages, culvert/bridge damages, breakout flows, field erosion/deposition, floodplain management, etc.)
- **Water Quality/Erosion and Sedimentation** (water quality, water resources, soil resources, field erosion/deposition, channel erosion/deposition, etc.)
- **Wildlife and Habitat** (Fish and wildlife, wetlands, endangered and threatened species, invasive species, migratory birds, forest resources, etc.)
- **Other**

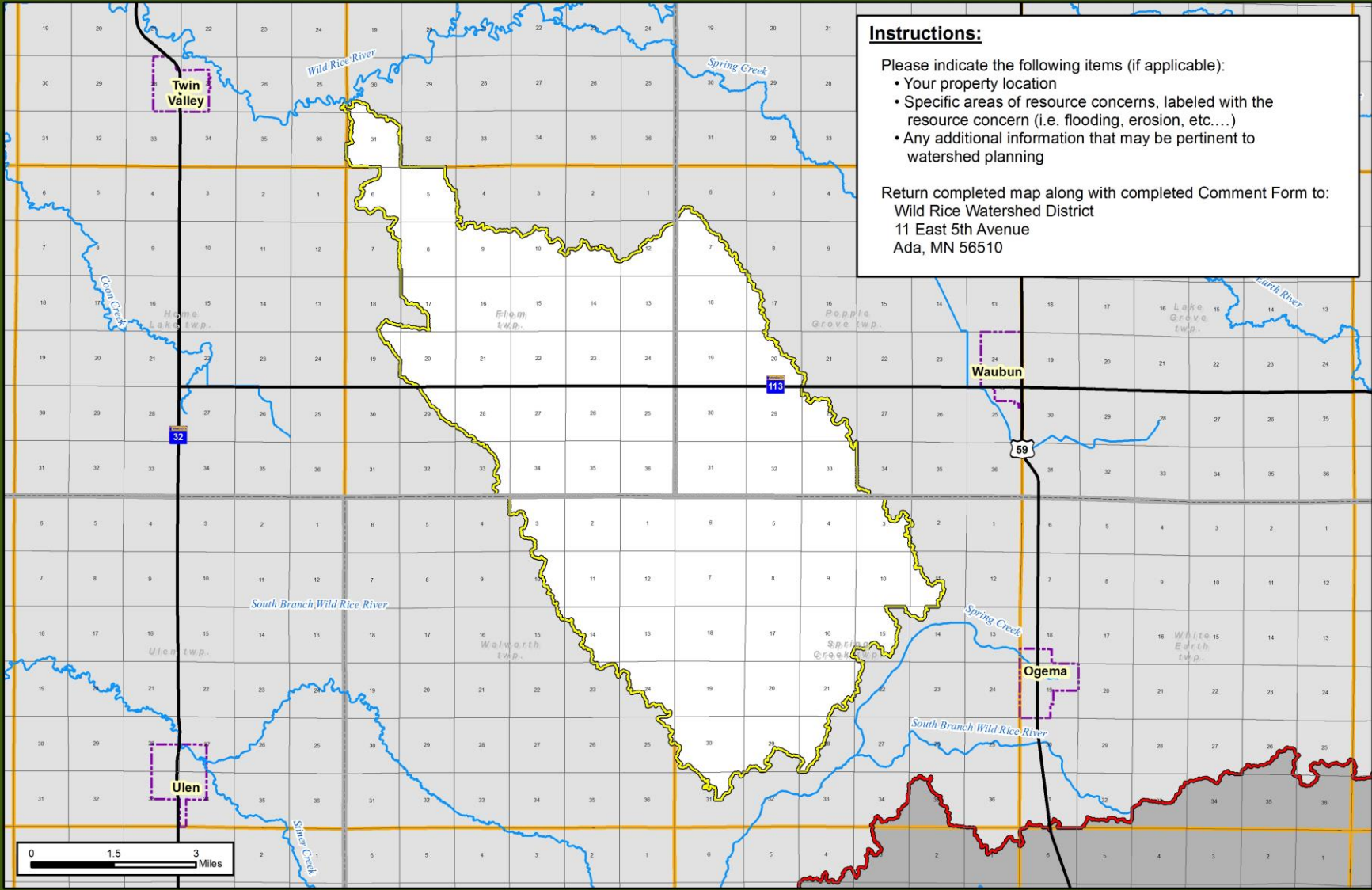
Circle the most appropriate ranking for each concern listed below. Refer to the KEY for definitions of each ranking. Concerns where the degree of concern is not indicated will be considered a zero value (No Concern or Not Relevant).

**KEY:**    0 = No Concern or Not Relevant    1 = Minimal Concern    2 = Minor Concern  
               3 = Moderate Concern                4 = Significant Concern    5 = Severe Concern

### Concerns for Project Scoping:

	No Concern					Severe Concern					
• Flooding/Flood Damages.....	0	1	2	3	4	5					
• Water Quality/Erosion and Sedimentation.....	0	1	2	3	4	5					
• Wildlife and Habitat.....	0	1	2	3	4	5					
• Others (Please describe in comment section).....	0	1	2	3	4	5					

H:\Farc\UBNI\4001\432000\_1432\_366\GIS\Public Meeting Map.mxd

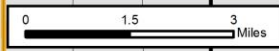


**Instructions:**

Please indicate the following items (if applicable):

- Your property location
- Specific areas of resource concerns, labeled with the resource concern (i.e. flooding, erosion, etc....)
- Any additional information that may be pertinent to watershed planning

Return completed map along with completed Comment Form to:  
 Wild Rice Watershed District  
 11 East 5th Avenue  
 Ada, MN 56510



**Wild Rice Watershed**  
 Moccasin Creek Watershed  
 NRCS RCPP Watershed Planning  
 Public Comment Form

- Rivers and Streams
- Moccasin Creek Watershed
- WRWD Boundary
- City Limits
- Township Boundary
- County Boundary



Prepared By:

**Houston Engineering Inc.**

# Questions