

Wild Rice Watershed District

11 5th Ave East · Ada MN 56510 · Phone (218) 784-5501 · Fax (218) 784-2459 · www.wildricewatershed.org

May 5, 2016

A Public Meeting was held at the Wild Rice Watershed District (WRWD) to begin the Public Scoping process for the Marsh River subwatershed containing the Green Meadow Dam. It was called to order at 9:00 a.m. by the administrator of the Wild Rice Watershed District, Kevin Ruud. He went over the objectives of the meeting and the agenda to clarify the process. Present at the meeting were: Mark Chisholm, Jerry Chisholm, Joe Chisholm, Keith Chisholm, Dave Vilmo, Stu Hemmingson, Corey Hanson, Rick Manke, Jim Litch, Diane Ista, Kevin Jensen, Duane Erickson (WRWD), Chuck Fritz, Jay Lietsch, Henry Van Offelen (MNDNR), Keith Weston (NRCS), Jerry Bents (Houston Engineering), and Kevin Ruud (WRWD).

The purpose of this meeting was to inform the all interested and potentially affected parties of the intent of the Wild Rice Watershed District to begin preparation of the Green Meadow Watershed Plan using funding from the Regional Conservation Partnership Program (RCPP) being provided through the Natural Resources Conservation District (NRCS). Studies with funds obtained through the RCPP are required to conform to the Watershed Protection and Flood Prevention Act (Public Law 83-566) and the National Environmental Policy Act (NEPA) requirements which will result in an Environmental Assessment. This public meeting was intended to serve as a scoping meeting to solicit public comment that will be used to help inform the scope of the study in accordance with the NEPA laws and regulations.

He then introduced Mr. Keith Weston with the Natural Resource Conservation Service (NRCS) who described the process that will be followed using the Regional Conservation Partnership Program (RCPP). He gave the history on how the Red River Retention Authority (RRRA) had put together an application for the RCPP process requesting 20 million dollars to be used for planning and construction to help solve problems within the Red River basin. The RRRA was awarded 12 million dollars and the decision was made by the RRRA to use the available funds for the planning process using Public Law 83-566. Mr. Weston then explained the seven step process that will be used for this watershed planning process. The purpose of this particular meeting is to assist with step one of the process which identifies problems, opportunities & concerns within this area. This process will follow the NEPA guidelines to make sure that the public is involved appropriately.

It was explained to the public that the WRWD has elected to follow this process in order to leverage funds to help address the concerns within this watershed and also to make potential federal funding available for construction of possible solutions to the problems that may be identified during the watershed planning process.

Jerry Bents from Houston Engineering presented information on some of the known problems that have occurred in this watershed. This started with maps of past flood damage locations based on information from Township and County officials. He also discussed concerns at the Green Meadow Dam where in 2002 it nearly overtopped from excessive rainfall that year. He also identified areas below the dam where setback levees have been subject to continued erosion as the channel continues to migrate. Lastly he highlighted the lower reach channel that was repaired in 2011 using FEMA funds and local dollars. This repair was completed to repair erosion and sloughing issues that resulted from the 2006 flood.

Henry Van Offelen gave an overview of the of the known natural resources potential problems such as; altered hydrology, channel instability, soil erosion, degraded soil health, lack of riparian buffers, and loss of existing grassland and wetland habitat.

Jerry Bents followed up with the timeline of the next steps and will be completed as part of the watershed planning study. He also let people know that there will be staff and equipment out in the watershed gathering additional information.

At the end of the presentation, a Public Scoping Meeting Comment Form was provided to each person in attendance. It was explained that this form would serve as the means by which formal public comment would be collected. Each participant was encouraged to complete the form and return it to the WRWD office (at the address included on the form). A copy of the form will also be posted to the WRWD website for interested parties that were unable to attend the meeting.

Following this public scoping meeting, the public comment period will remain open until June 5, 2016. A copy of the presentation used during the meeting and a copy of the public comment form is attached to these minutes.

The meeting was adjourned at 10:15 a.m.

Public Scoping Meeting Comment Form

Green Meadow Sub-Watershed

NRCS Watershed Plan

May 5, 2016

Background

The Wild Rice Watershed District (WRWD) secured funding through the Red River Retention Authority for Watershed Planning under the Regional Conservation Partnership Program (RCPP), administered by the Natural Resources Conservation Service (NRCS). The RCPP funding was made available for watershed planning in the Green Meadow Sub-Watershed and it is required to follow Public Law 83-566 requirements.

The Watershed Planning must also comply with the National Environmental Protection Act (NEPA) requirements. Tasks required for the NRCS Watershed Plan are described in the *Feasibility Study and Plan of Work* document, and generally include: Identifying a Purpose and Need, Developing an Environmental Assessment, Identifying the Affected Environment (resource problems), Developing Alternatives, Identifying Environmental Consequences of the alternatives, determining a Preferred Alternative, and creating an overall Watershed Plan. Public participation will be a vital component throughout the entire planning process, beginning with this public meeting.

Purpose of Today's Meeting

The initial step in NRCS Watershed Planning, as directed by NEPA, is to allow for input from all interested parties including federal, state, and local agencies and other interested groups or persons. Initial input will be focused on resource concerns in and adjacent to the Green Meadow Sub-Watershed. In order to gather input on resource concerns, we would request that the attached comment form be completed and provided to the WRWD.

Identified Resource Concerns:

- **Flooding/Flood Damages** (i.e. agricultural effects from delayed planting, prevented planting, crop flood inundation, road damages, culvert/bridge damages, breakout flows, field erosion/deposition, floodplain management, etc.)
- **Water Quality/Erosion and Sedimentation** (water quality, water resources, soil resources, field erosion/deposition, channel erosion/deposition, etc.)
- **Wildlife and Habitat** (Fish and wildlife, wetlands, endangered and threatened species, invasive species, migratory birds, forest resources, etc.)
- **Other**

Please fill out the following information based on your priorities for the Green Meadow Sub-Watershed. Comment forms will be accepted for all forms postmarked on or before June 5, 2016. Completed comment forms can be mailed to the WRWD office at:

**Wild Rice Watershed District
11 East 5th Avenue
Ada, MN 56510**

Or via email to tara@wildricewatershed.org

Name: _____

Phone Number: _____

Address: _____

Affiliation: _____
(agency, resident, commissioner, mayor, etc...)

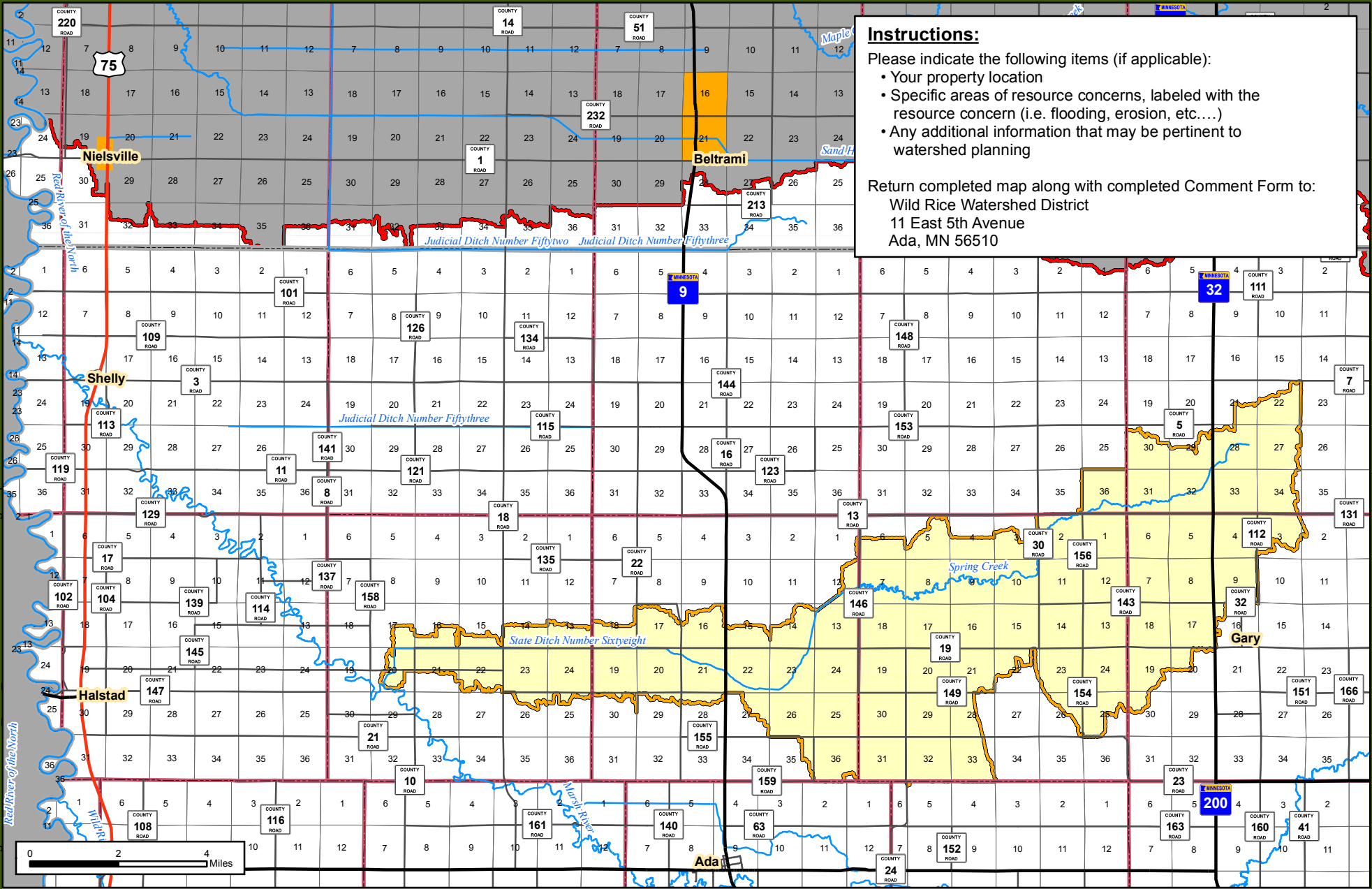
Circle the most appropriate ranking for each concern listed below. Refer to the KEY for definitions of each ranking. Concerns where the degree of concern is not indicated will be considered a zero value (No Concern or Not Relevant).

KEY: **0 = No Concern or Not Relevant** **1 = Minimal Concern** **2 = Minor Concern**
 3 = Moderate Concern **4 = Significant Concern** **5 = Severe Concern**

<u>Concerns for Project Scoping:</u>	No Concern					Severe Concern
• Flooding/Flood Damages.....	0	1	2	3	4	5
• Water Quality/Erosion and Sedimentation.....	0	1	2	3	4	5
• Wildlife and Habitat.....	0	1	2	3	4	5
• Others (Please describe in comment section).....	0	1	2	3	4	5

Additional Comments: _____

Hi:Fargo\JBN14001432\00_1432_367\GIS\Initial Public Meeting Map.mxd



Instructions:

Please indicate the following items (if applicable):

- Your property location
- Specific areas of resource concerns, labeled with the resource concern (i.e. flooding, erosion, etc....)
- Any additional information that may be pertinent to watershed planning

Return completed map along with completed Comment Form to:
 Wild Rice Watershed District
 11 East 5th Avenue
 Ada, MN 56510

Wild Rice Watershed District
 Green Meadow Sub-Watershed
 NRCS RCPP Watershed Planning
 Public Comment Form

-  Green Meadow Watershed
-  WRWD Boundary
-  Rivers and Streams
-  County Boundary
-  Township Boundary
-  City Limits



Prepared By:



Houston Engineering Inc.

Green Meadow Sub-Watershed Public Scoping Meeting **OBJECTIVES**

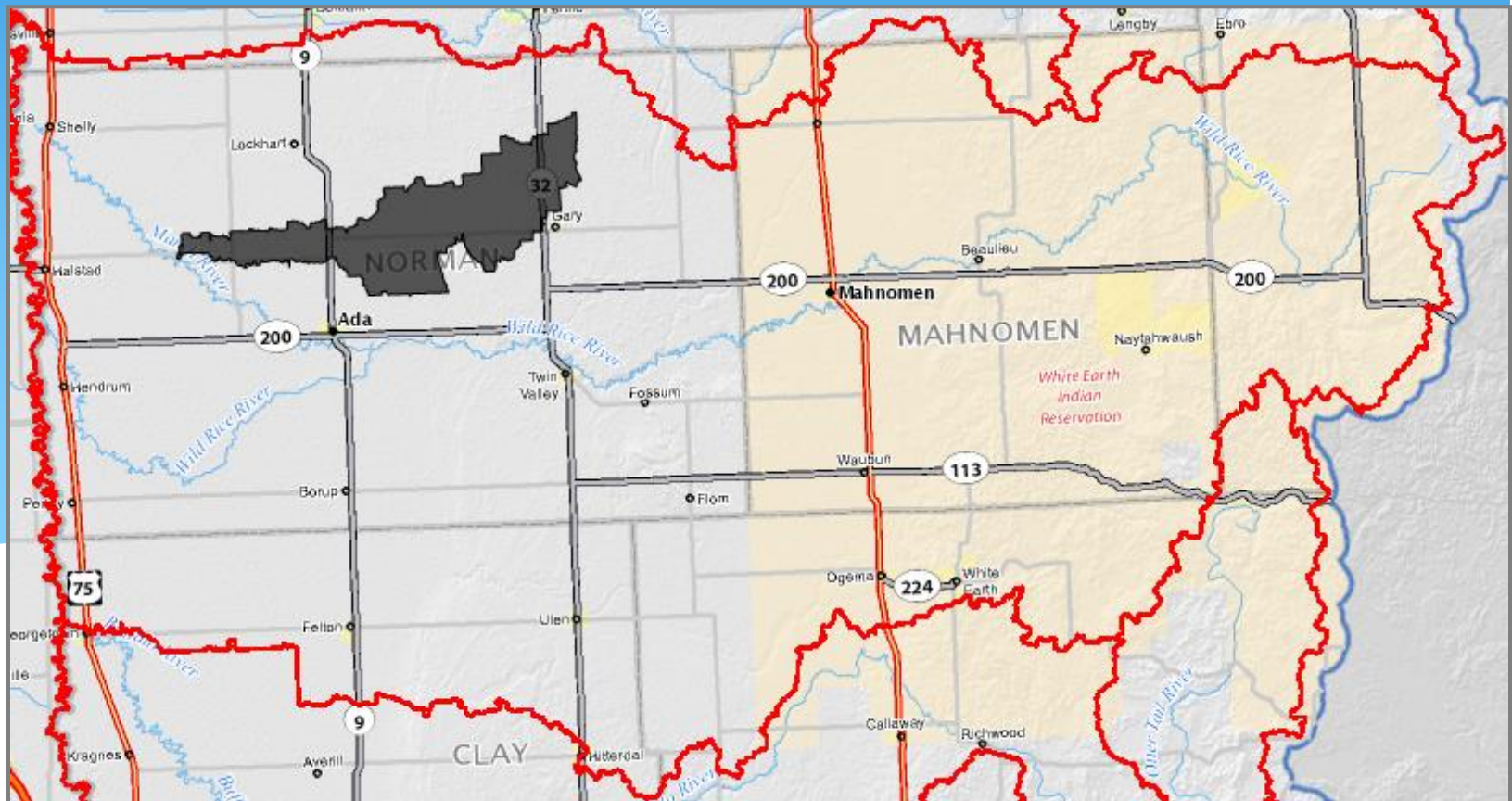
1. Overview - PL566 Planning process
2. Solicit Comments on the Resource Concerns
3. Inform Public of Future Steps

Green Meadow Sub-Watershed Public Scoping Meeting AGENDA

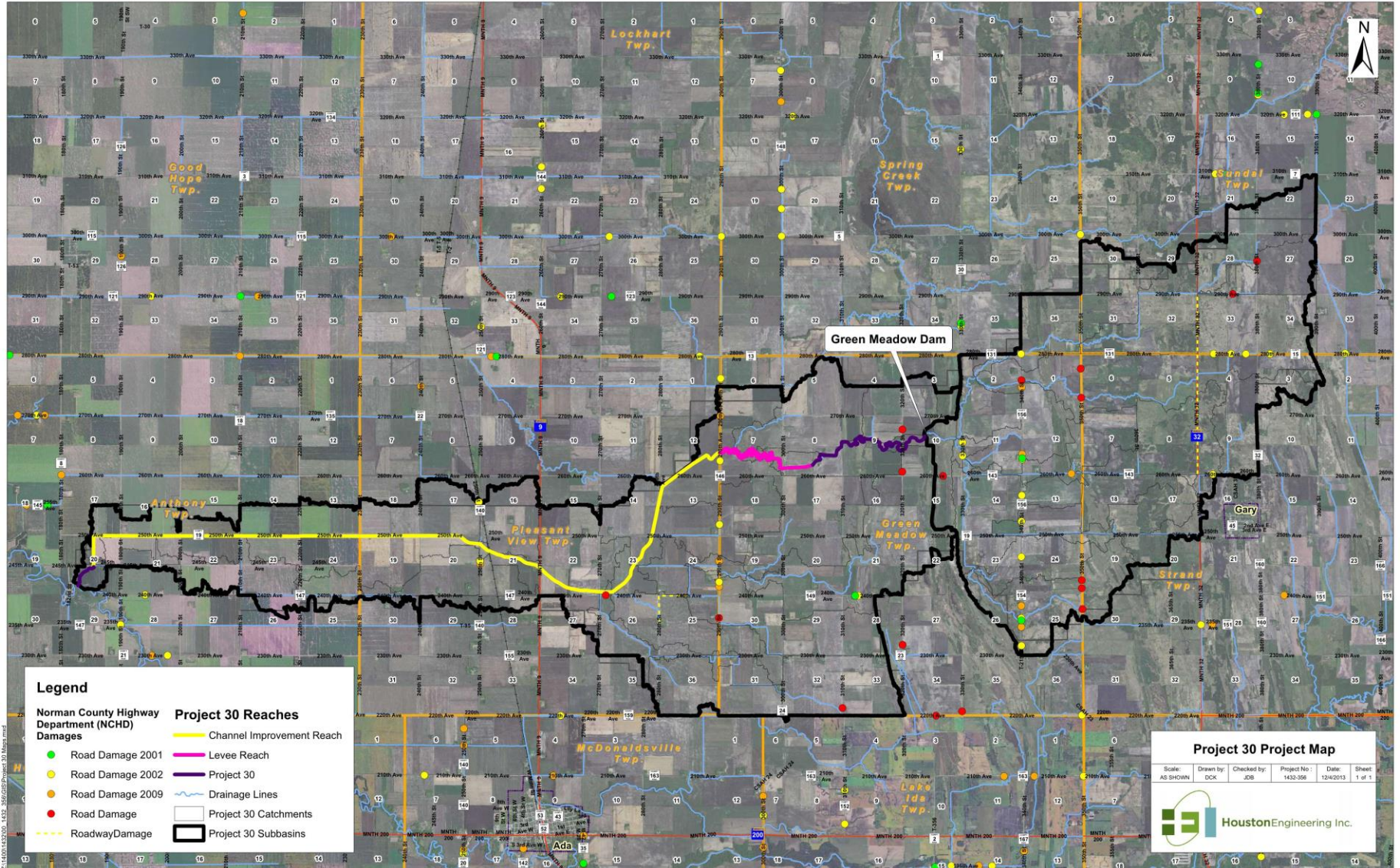
1. Introduce Study Area
2. Public Law 566 Planning Process Overview
3. Watershed Setting and Resource Concerns
4. Overview of Next Steps
5. Questions/Public Comment Period
6. Adjourn

Study Area

- Marsh River Sub-Watershed
- Approximately 69 Square Miles
- Contains Upper Green Meadow Dam
- Project 30 – WRWD Project



Study Area



Regional Conservation Partnership Program (RCPP)

- 2014 Farm Bill
- Red River Retention Authority awarded \$12M
- RRRRA approved 20 Watershed Planning Efforts
 - 14 Minnesota, 6 North Dakota
- WRWD
 - Green Meadow, South Branch, Moccasin Creek

RCCP Planning Process

INITIATE PLANNING

- * Discuss purpose and need for project with sponsors/Initiate study.

Step 1 - IDENTIFY PROBLEMS, OPPORTUNITIES & CONCERNS

- * Identify the need for the proposed action (quantify, extent, magnitude, timing, frequency etc.)

Step 2 - DETERMINE OBJECTIVES

- * Write purpose and need statement and Write scope of plan-EA/EIS

Step 3 - INVENTORY RESOURCES

- * Conduct detailed resource inventories and watershed assessment
- * Economics, social effects, Archeological and historic resources
- * Engineering/Geology/Support maps
- * Document problems

Step 4 - ANALYZE RESOURCE DATA

- * Geology, Hydrology & Hydraulics, Cultural, Economics and Social

Step 5 - FORMULATE ALTERNATIVES

- * Develop reasonable alternatives, mitigation strategies and costs (Preliminary plans)

Step 6 - EVALUATE ALTERNATIVES

- * Env. Resources, Geotechnical, Hydrology & Hydraulics, Economics, Significance of effects,...

Step 7 - MAKE DECISIONS (EA/EIS, Public Involvement,...)

RCPP Planning Process - NEPA

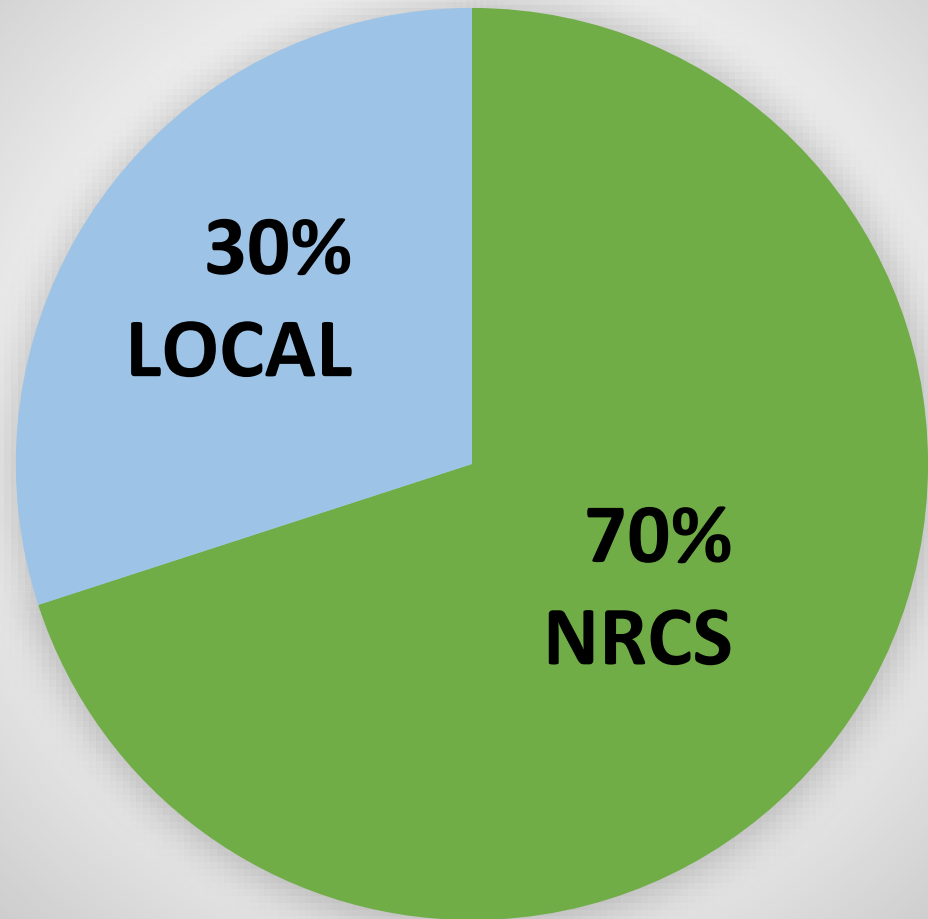
RCPP planning process will follow NEPA guidelines

- * 40 CFR 1506.6 – Public Involvement
- * Primary Goal
 - * Ensure all interested and affected parties are aware of the proposed action

(a) “make diligent efforts to involve the public in preparing and implementing their NEPA procedures.”

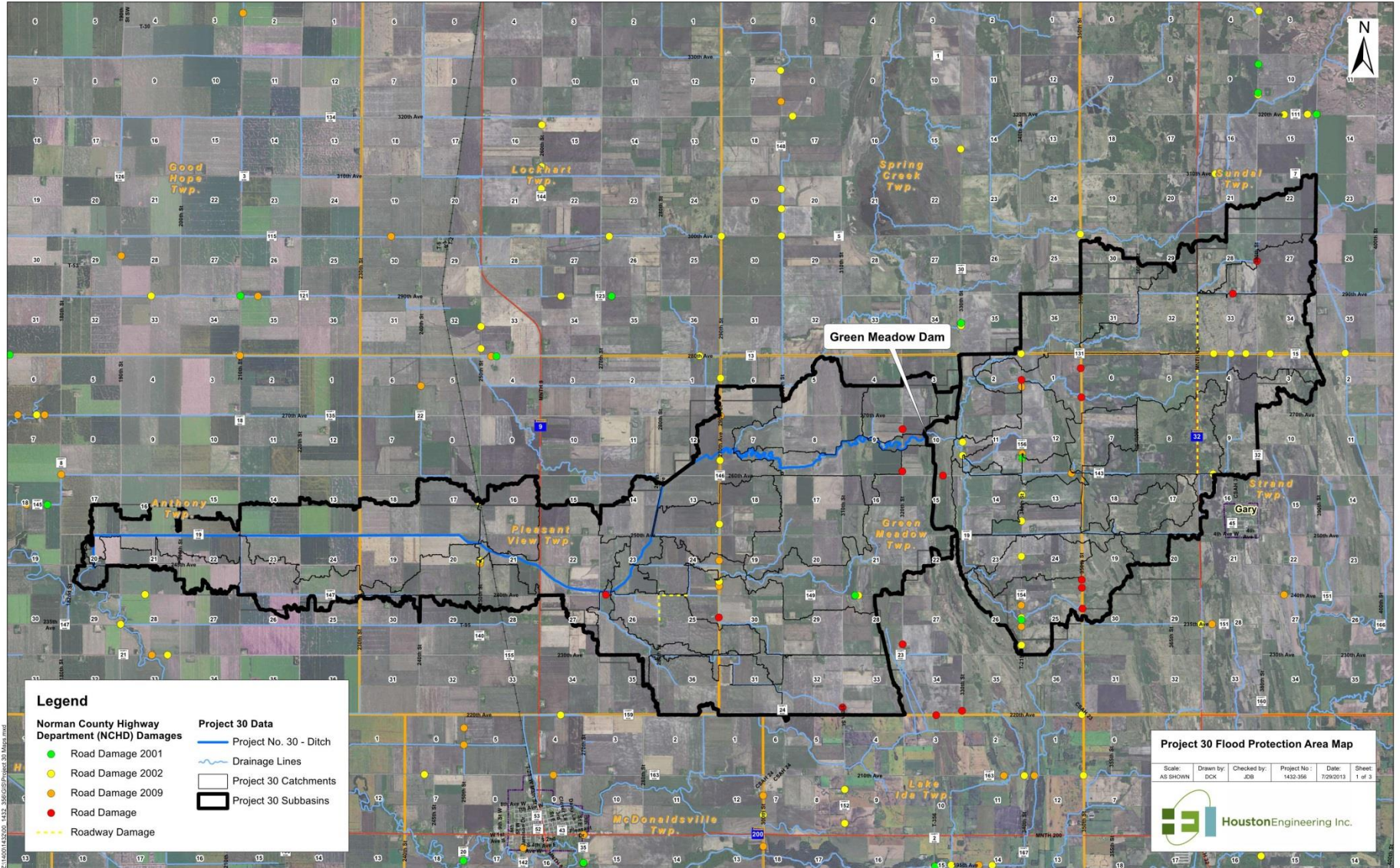
Why RCPP?

COST SHARE BREAKDOWN



Watershed Setting and Known Resource Concerns

Problems - Infrastructure Damages



Legend

Norman County Highway Department (NCHD) Damages	Project 30 Data
● Road Damage 2001	— Project No. 30 - Ditch
● Road Damage 2002	— Drainage Lines
● Road Damage 2009	□ Project 30 Catchments
● Road Damage	□ Project 30 Subbasins
--- Roadway Damage	

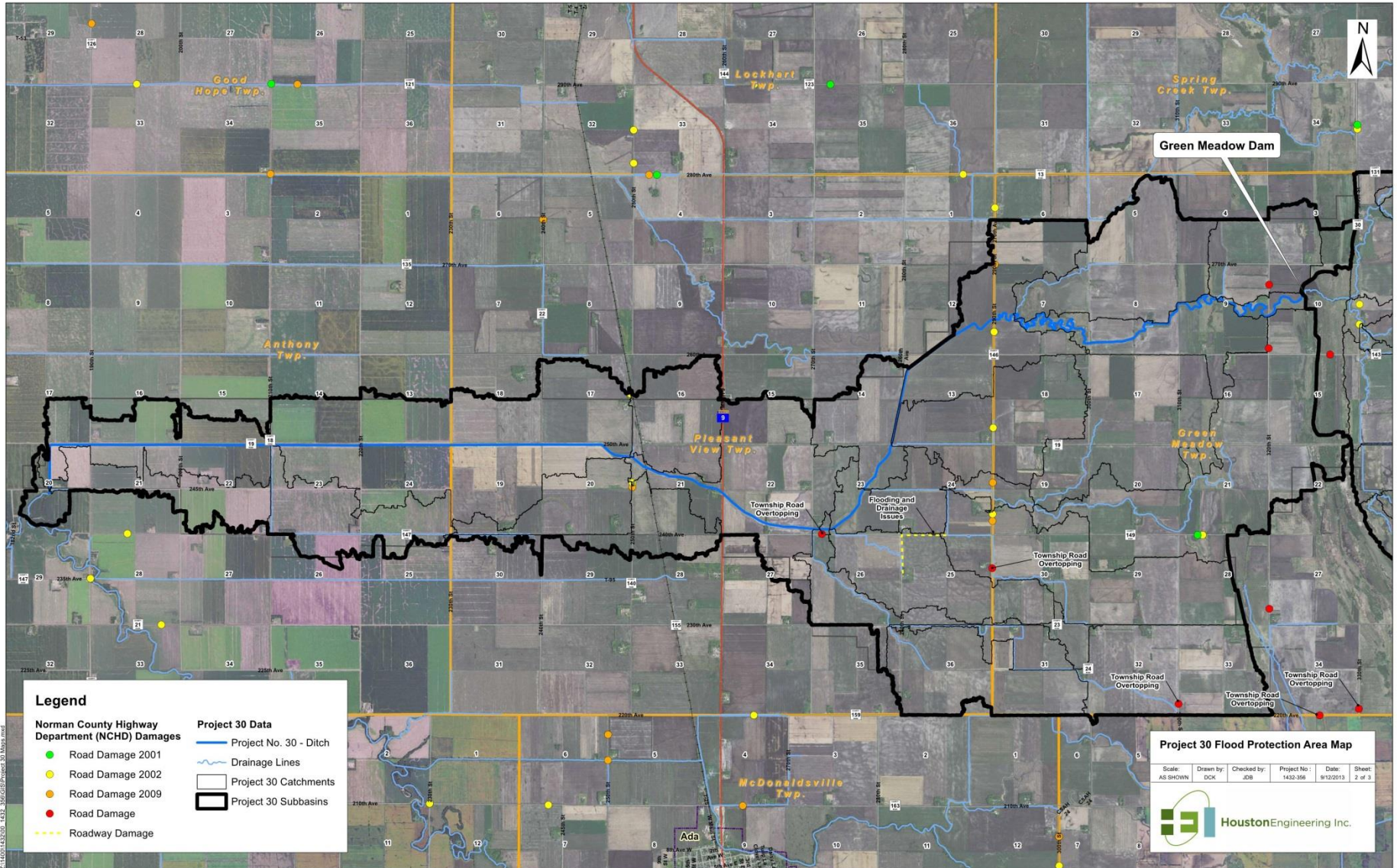
Project 30 Flood Protection Area Map

Scale: AS SHOWN	Drawn by: DCR	Checked by: JDB	Project No: 1430-308	Date: 7/20/2013	Sheet: 1 of 3
-----------------	---------------	-----------------	----------------------	-----------------	---------------

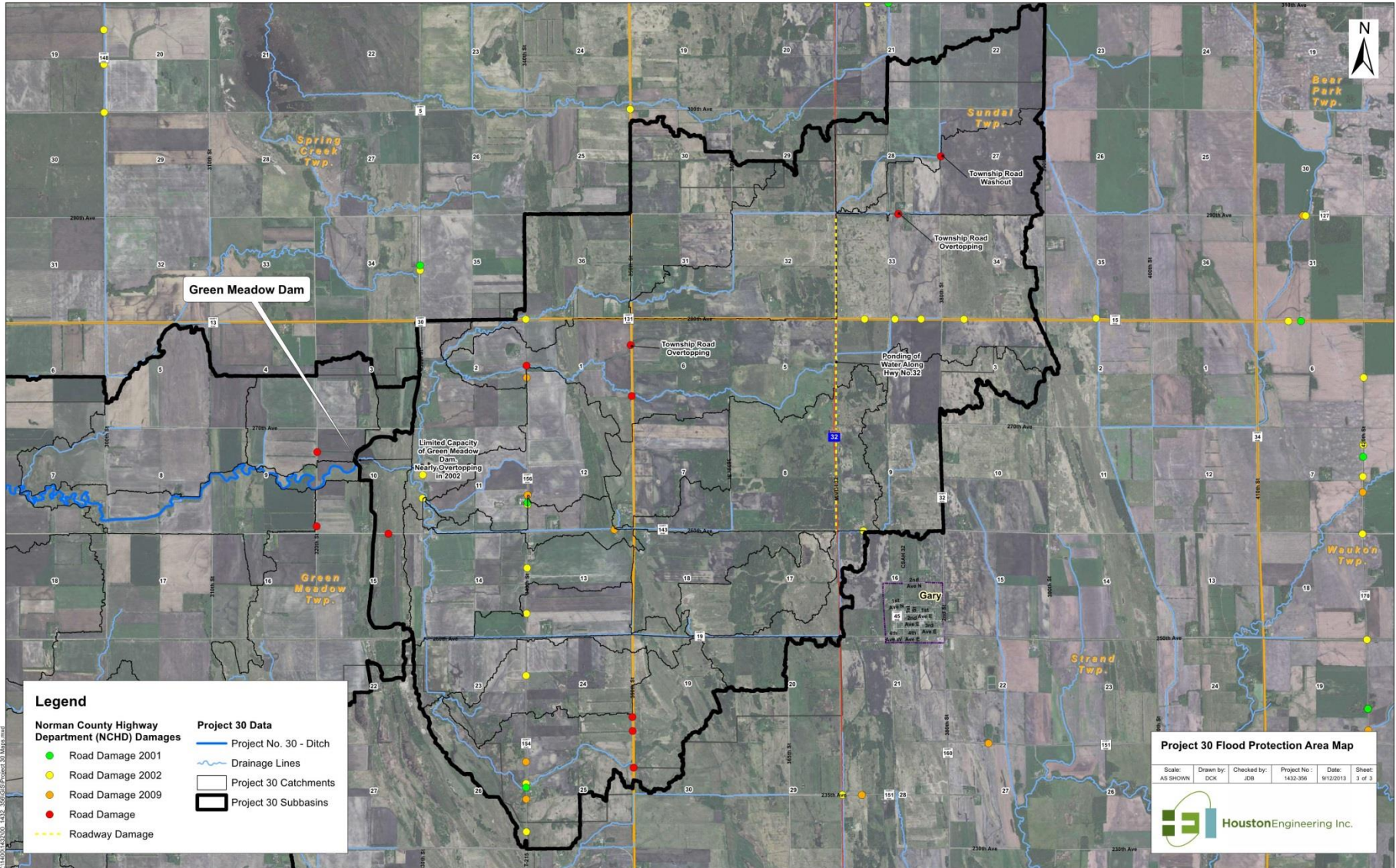
HoustonEngineering Inc.

Z:\4001432000 - 1430 - 308\Figures\Project 30 Map.mxd

Problems - Infrastructure Damages



Problems - Infrastructure Damages



Problems

- * Green Meadow Dam
- * Limited Capacity
- * Sandbagging Overflows in 2002



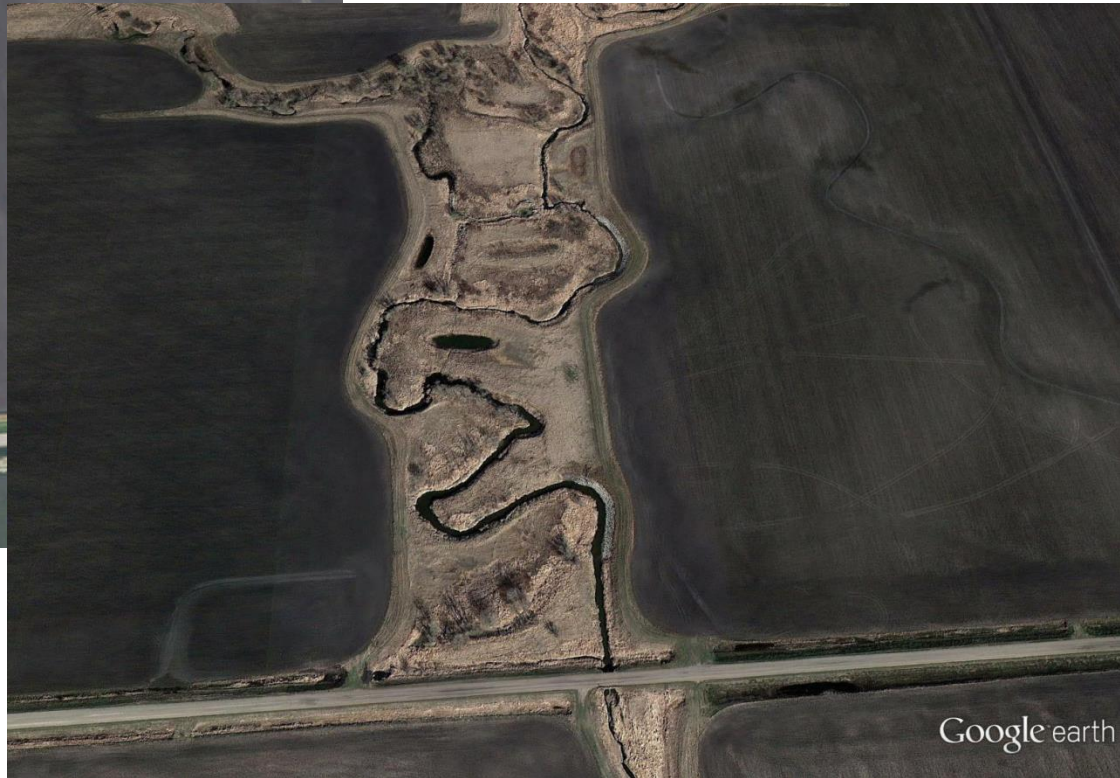
Problems

- * Green Meadow Dam
- * Substantial Repair (2006)
 - * Erosion Repairs
 - * Clay Liner - Partial



Problems

- * Channel Erosion
 - * Middle Reach – Erosion on Setback Levees
 - * Riprap and Levee Setbacks



Problems

- * Lower Reach Channel – 2011 Repair
- * Substantial Repair (2011)
 - * Section 20-24 (Anthony Township) and Section 19 (Pleasant View Township)
 - * FEMA Funding Assistance



Problems

- * Lower Reach Channel – 2011 Repair
- * FEMA Approved Repair Method
 - * Backslope at 5:1
 - * Restore Gradeline and Grade Control
 - * Re-Establish Grass Buffers

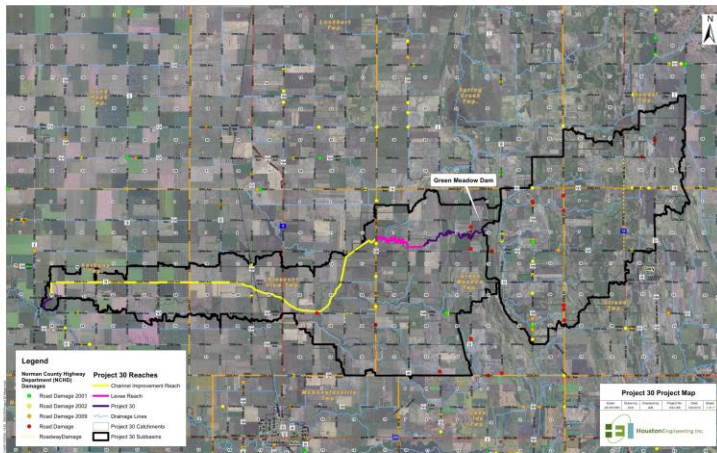


Natural Resource and Water Quality Concerns

- * Altered hydrology
- * Channel instability
- * Soil erosion (wind and water) from upland sources
- * Degraded soil health
- * Lack of riparian buffers
- * Loss of existing grassland and wetland habitat
(e.g. crp conversion)

Overview of Next Steps

RCPP Planning Process



INITIATE PLANNING

- * Discuss purpose and need for project with sponsors/Initiate study.

Step 1 - IDENTIFY PROBLEMS, OPPORTUNITIES & CONCERNS

- * Identify the need for the proposed action (quantify, extent, magnitude, timing, frequency etc.)

Step 2 - DETERMINE OBJECTIVES

- * Write purpose and need statement and Write scope of plan-EA/EIS

Step 3 - INVENTORY RESOURCES

- * Conduct detailed resource inventories and watershed assessment
- * Economics, social effects, Archeological and historic resources
- * Engineering/Geology/Support maps
- * Document problems

Step 4 - ANALYZE RESOURCE DATA

- * Geology, Hydrology & Hydraulics, Cultural, Economics and Social

Step 5 - FORMULATE ALTERNATIVES

- * Develop reasonable alternatives, mitigation strategies and costs (Preliminary plans)

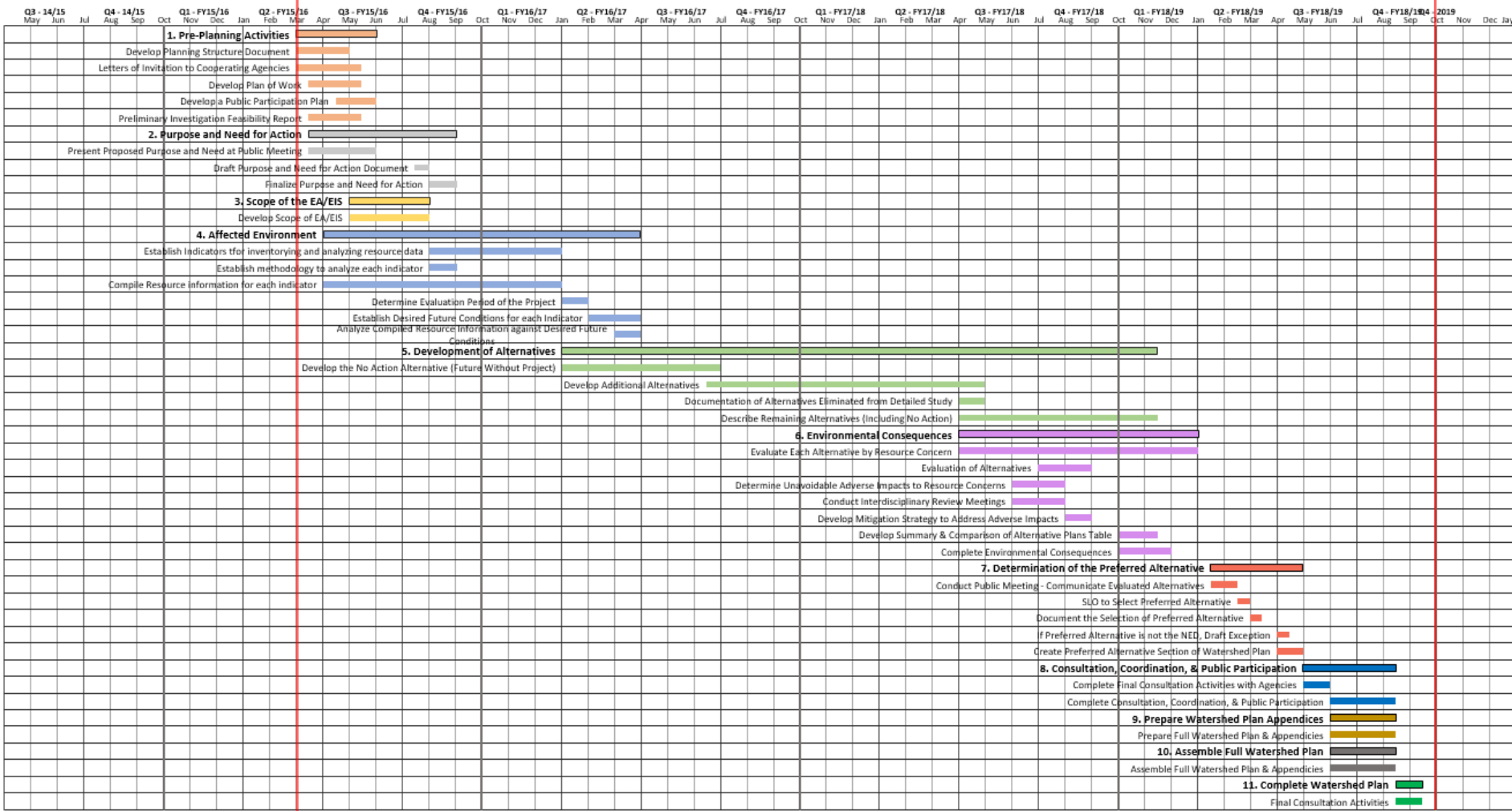
Step 6 - EVALUATE ALTERNATIVES

- * Env. Resources, Geotechnical, Hydrology & Hydraulics, Economics, Significance of effects,...

Step 7 - MAKE DECISIONS (EA/EIS, Public Involvement,...)

Watershed Planning Timeline

Wild Rice River Watershed District - Green Meadow Sub-Watershed - NRCS Watershed Plan Schedule of Work



Watershed Planning Timeline

1-3

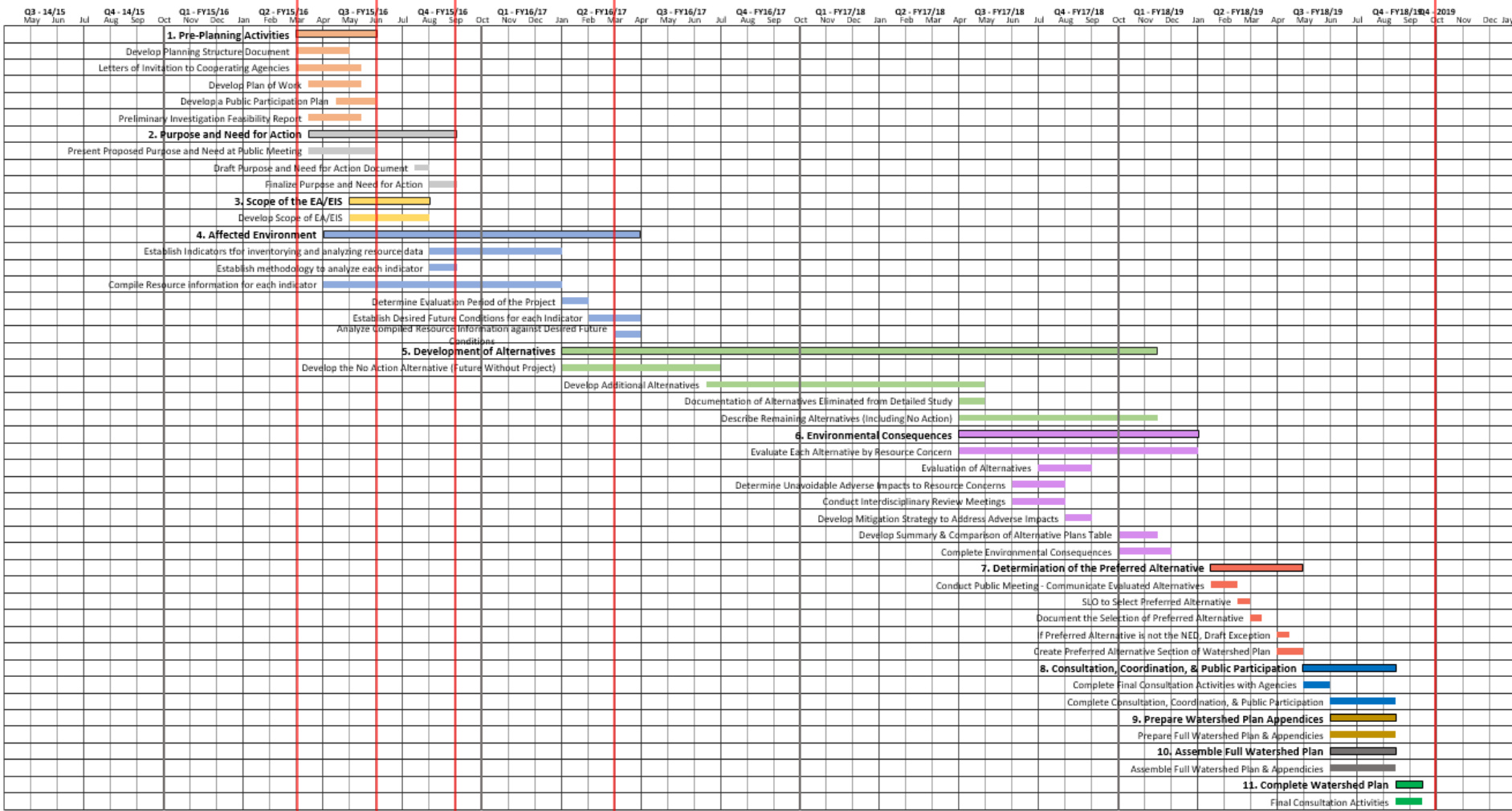
3-6

6-12

>12 months

Sep 2019

Wild Rice River Watershed District - Green Meadow Sub-Watershed - NRCS Watershed Plan Schedule of Work



Watershed Planning Timeline

1-3 Months

- * Plan of Work
- * Develop Team
- * Feasibility Report
- * Define Concerns
- * **Public Meeting**
- * Field Survey
- * Begin H&H

3-6 Months

- * Purpose & Need
- * Scope EA
- * Field Survey
- * Ex. H&H Modeling
- * Field Inventory
- * Begin Economics

6-12 Months

- * Finalize Ex. H&H
- * Without Project Conditions
- * Economics:
 - * Damages
- * Preliminary Alternative Screening
- * Preliminary Cultural Review

12+ Months

- * Alternative Screening
- * Geotech
- * Impacted Lands
- * Alternatives for Detailed Study
- * H&H Alternatives
- * Detailed Survey, Geotech, Design

Questions/Comments/ Form Completion

Public Input

Public Scoping Meeting Comment Form
Green Meadow Sub-Watershed
NRCS Watershed Plan
 May 5, 2016

Background

The Wild Rice Watershed District (WRWD) secured funding through the Red River Retention Authority for Watershed Planning under the Regional Conservation Partnership Program (RCPP), administered by the Natural Resources Conservation Service (NRCS). The RCPP funding was made available for watershed planning in the Green Meadow Sub-Watershed and it is required to follow Public Law 83-566 requirements.

The Watershed Planning must also comply with the National Environmental Protection Act (NEPA) requirements. Tasks required for the NRCS Watershed Plan are described in the *Feasibility Study and Plan of Work* document, and generally include: Identifying a Purpose and Need, Developing an Environmental Assessment, Identifying the Affected Environment (resource problems), Developing Alternatives, Identifying Environmental Consequences of the alternatives, determining a Preferred Alternative, and creating an overall Watershed Plan. Public participation will be a vital component throughout the entire planning process, beginning with this public meeting.

Purpose of Today's Meeting

The initial step in NRCS Watershed Planning, as directed by NEPA, is to allow for input from all interested parties including federal, state, and local agencies and other interested groups or persons. Initial input will be focused on resource concerns in and adjacent to the Green Meadow Sub-Watershed. In order to gather input on resource concerns, we would request that the attached comment form be completed and provided to the WRWD.

Identified Resource Concerns:

- o **Flooding/Flood Damages** (i.e. agricultural effects from delayed planting, prevented planting, crop flood inundation, road damages, culvert/bridge damages, breakout flows, field erosion/deposition, floodplain management, etc.)
- o **Water Quality/Erosion and Sedimentation** (water quality, water resources, soil resources, field erosion/deposition, channel erosion/deposition, etc.)
- o **Wildlife and Habitat** (Fish and wildlife, wetlands, endangered and threatened species, invasive species, migratory birds, forest resources, etc.)
- o **Other**

Please fill out the following information based on your priorities for the Green Meadow Sub-Watershed. Comment forms will be accepted for all forms postmarked on or before June 5, 2016. Completed comment forms can be mailed to the WRWD office at:

Wild Rice Watershed District
 11 East 5th Avenue
 Ada, MN 56510

Or via email to tara@wildricewatershed.org

Name: _____

Phone Number: _____

Address: _____

Affiliation: _____

(agency, resident, commissioner, mayor, etc...)

Circle the most appropriate ranking for each concern listed below. Refer to the KEY for definitions of each ranking. Concerns where the degree of concern is not indicated will be considered a zero value (No Concern or Not Relevant).

KEY: 0 = No Concern or Not Relevant 1 = Minimal Concern 2 = Minor Concern
 3 = Moderate Concern 4 = Significant Concern 5 = Severe Concern

<u>Concerns for Project Scoping:</u>	No Concern					Severe Concern					
• Flooding/Flood Damages.....	0	1	2	3	4	5					
• Water Quality/Erosion and Sedimentation.....	0	1	2	3	4	5					
• Wildlife and Habitat.....	0	1	2	3	4	5					
• Others (Please describe in comment section).....	0	1	2	3	4	5					

Additional Comments: _____

Public Input

Identified Resource Concerns:

- **Flooding/Flood Damages** (i.e. agricultural effects from delayed planting, prevented planting, crop flood inundation, road damages, culvert/bridge damages, breakout flows, field erosion/deposition, floodplain management, etc.)
- **Water Quality/Erosion and Sedimentation** (water quality, water resources, soil resources, field erosion/deposition, channel erosion/deposition, etc.)
- **Wildlife and Habitat** (Fish and wildlife, wetlands, endangered and threatened species, invasive species, migratory birds, forest resources, etc.)
- **Other**

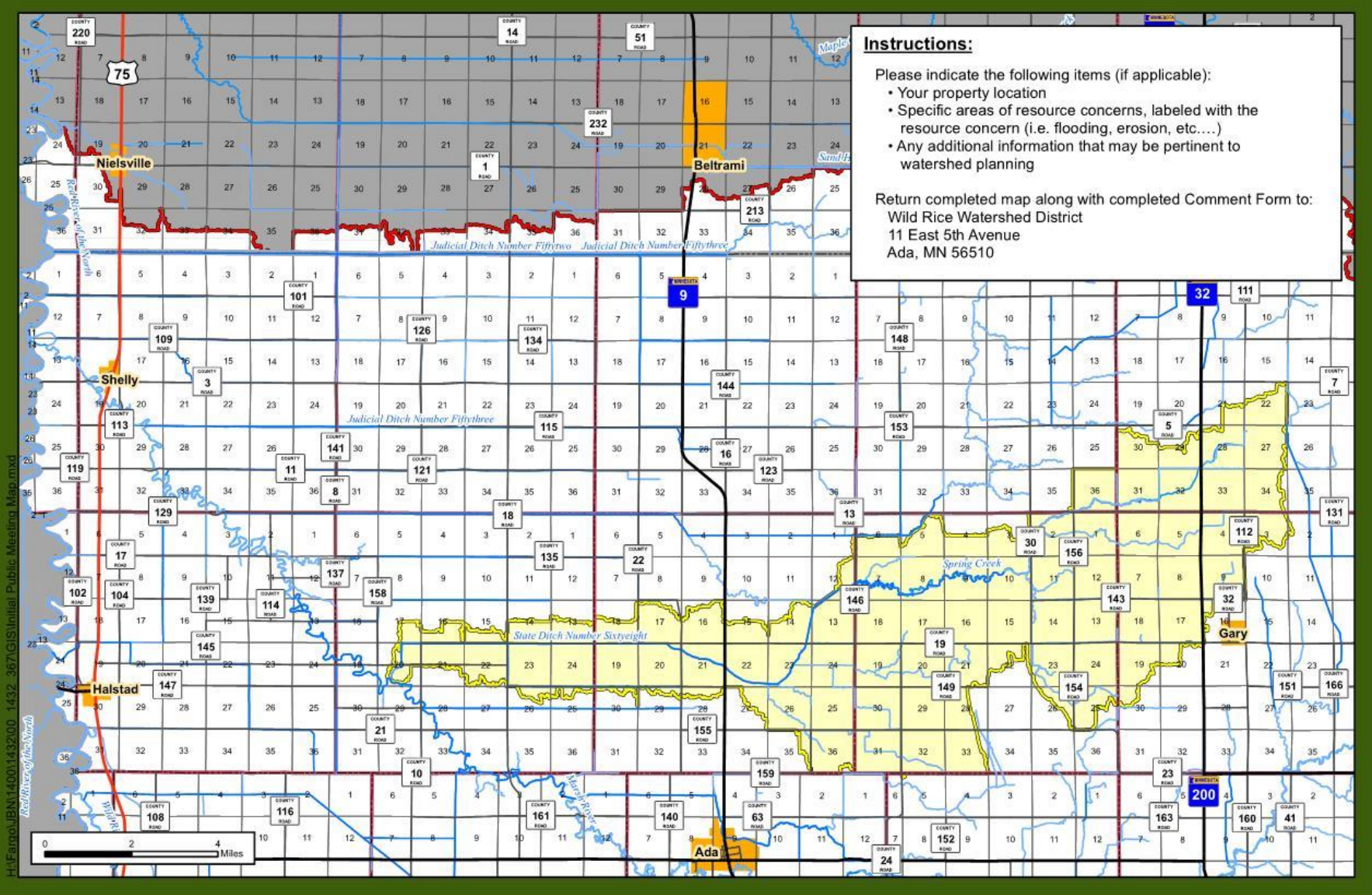
○ Water Quality/Erosion and Sedimentation (water quality, water resources, soil resources, field erosion/deposition, channel

Circle the most appropriate ranking for each concern listed below. Refer to the KEY for definitions of each ranking. Concerns where the degree of concern is not indicated will be considered a zero value (No Concern or Not Relevant).

KEY: 0 = No Concern or Not Relevant 1 = Minimal Concern 2 = Minor Concern
 3 = Moderate Concern 4 = Significant Concern 5 = Severe Concern

Concerns for Project Scoping:

	No Concern					Severe Concern
• Flooding/Flood Damages.....	0	1	2	3	4	5
• Water Quality/Erosion and Sedimentation.....	0	1	2	3	4	5
• Wildlife and Habitat.....	0	1	2	3	4	5
• Others (Please describe in comment section).....	0	1	2	3	4	5



Instructions:

- Please indicate the following items (if applicable):
- Your property location
- Specific areas of resource concerns, labeled with the resource concern (i.e. flooding, erosion, etc....)
- Any additional information that may be pertinent to watershed planning

Return completed map along with completed Comment Form to:
 Wild Rice Watershed District
 11 East 5th Avenue
 Ada, MN 56510

H:\Farroll\IBN1400\143200_1432_367\GIS\Initial Public Meeting Map.mxd
 Wild Rice Watershed District

Wild Rice Watershed District
 Green Meadow Sub-Watershed
 NRCS RCPP Watershed Planning
 Public Comment Form

- Green Meadow Watershed
- WRWD Boundary
- Rivers and Streams
- County Boundary
- Township Boundary
- City Limits



Prepared By:

Houston Engineering Inc.

Questions